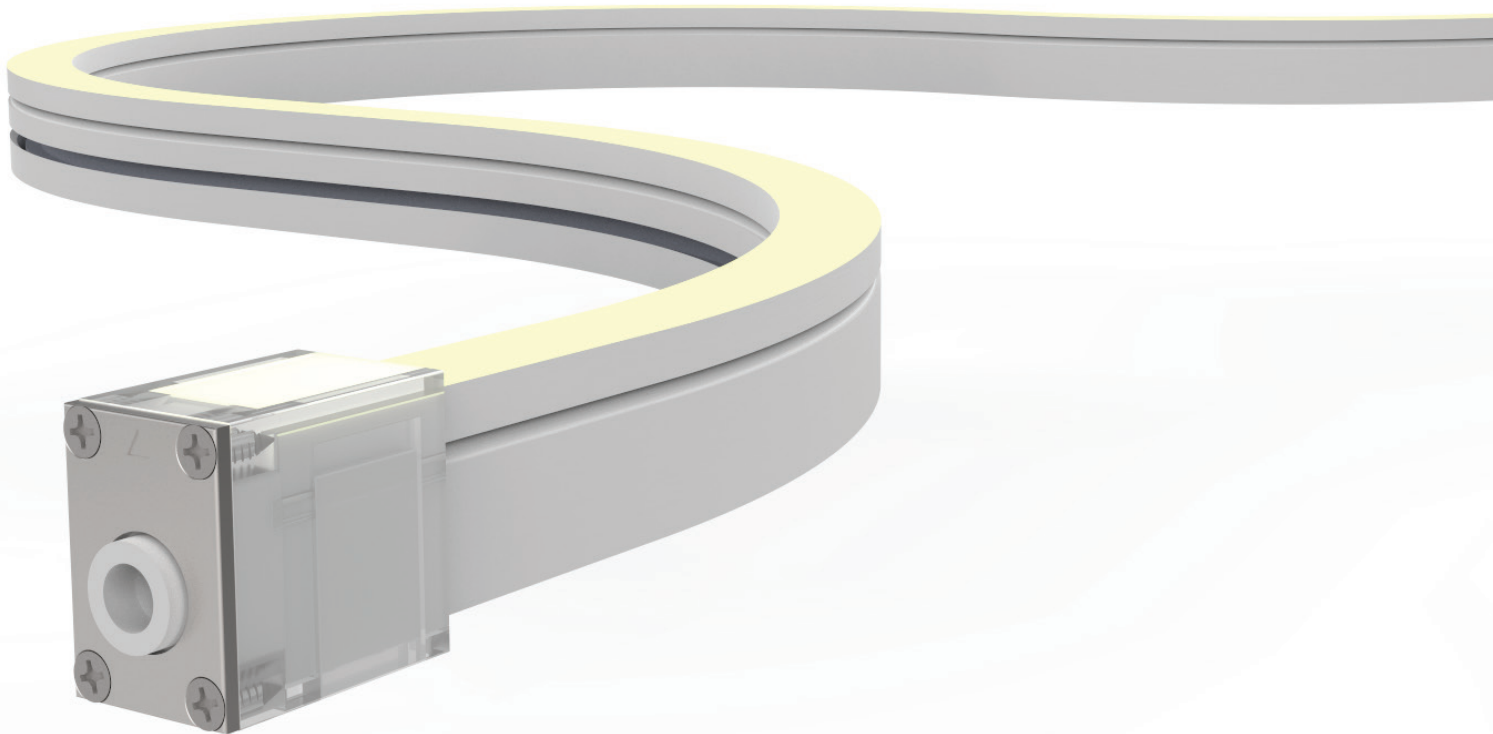
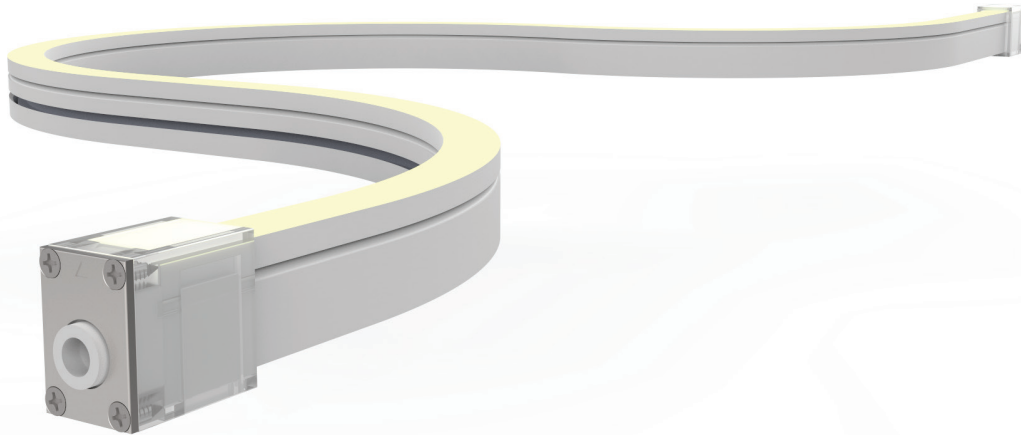




TRACE

Tunable White Horizontal





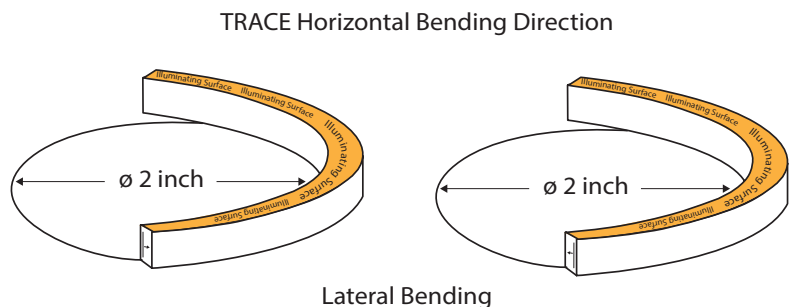
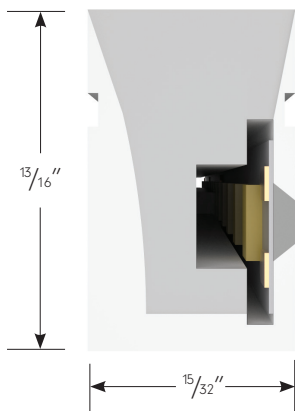
Project: _____ Type: _____

Product Features

- Tunable white from 2200K - 6000K range for precise color choice when used with DMX controls and software
- Constructed using flexible SMD LEDs with zero voltage drop for reliability and uniformity of light
- Used to outline structures or where traditional glass neon is used
- Low Voltage 24V DC
- Long-life LEDs with tight cutting increments for precise field installation
- UV Stabilized for exterior use with silicone housing (no yellowing or cracking)
- IP67 Rating
- IK07 Rating - protected against 2 joules impact
- 1 Bin, 1.5 step color consistency



Dimensions



Order Specification Guide

NOTE: Lengths and quantity of each run must be submitted at time of order.
 TRACE is factory prep only. In-field cutting will void warranty.

PRODUCT CODE	INTENSITY	PROFILE	LED COLOR	RANGE	VOLTAGE
TRCE		H	TW	01	24
TRCE = Trace Flexible Light	L = Low Output S = Standard Output H = High Output	H = Horizontal	TW = Tunable White	01 = 2200-6000K	24 = 24V DC

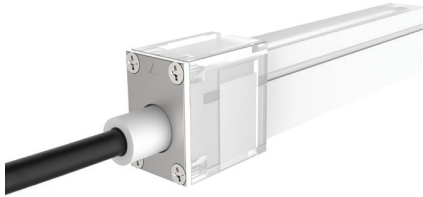
Specifications

LED Intensity	Low Output	Standard Output	High Output
Lumens (lm/ft)	48	96	137
Beam Angle	124.4°		
Efficacy (lm/W)	32		
LEDs	3014		
CRI	80+		
Electrical			
Dimming	DMX		
Input Voltage	24V DC		
Power Consumption (W/ft)	1.5	3	4.5
Maximum Run	58'	29'	19'
Physical			
Dimensions	15/32" X 13/16"		
Cutting Increments	1.97"		
Material	UV, Solvent, Saltwater resistant silicone		
Wire Exit Options	Front, Side, Bottom		
LED PIN Temperature	65°C / 149°F		
Storage Temperature	-25°C / -13°F - 60°C / 140°F		
Ambient Temperature	Ta _{min} = 33°C / 90°F, Ta _{max}		
Certification and Testing			
Certification	cULus		
Environment	Wet Location		
IP Rating	IP67		
IK Rating	IK07		
Warranty	3 Years		

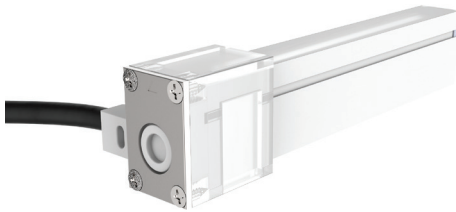
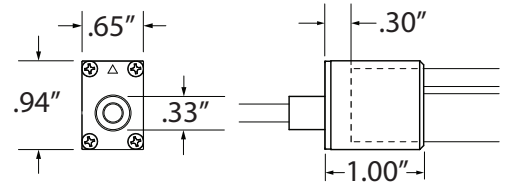
- Maximum Run length refers to single side feed in serial connection
- The given color temperature is the strip (after coating) color temperature
- The given data are typical values due to the tolerances of the production process and electrical components; values for the light output and electrical power can vary up to 10%

Power Lead Options - Horizontal

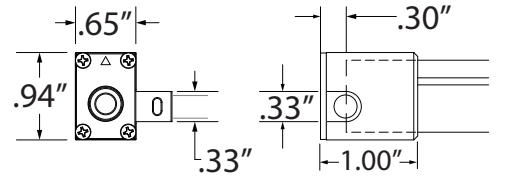
IP67: Rated for outdoor use and factory assembled.
 Note: The end cap is made of UV stabilized polycarbonate, which produces no yellowing and cracking over time.



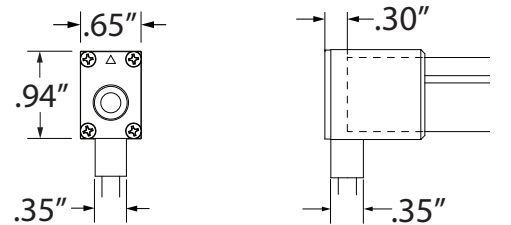
TRACE TW LEAD - FRONT
 Horizontal Front Lead Entry
 5' Power Lead Cable with End Cap



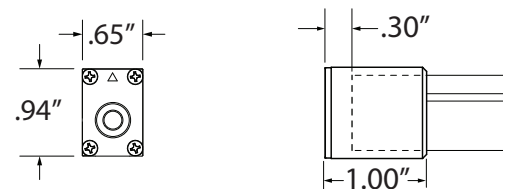
TRACE TW LEAD - SIDE
 Horizontal Side Lead Entry
 5' Power Lead Cable with End Cap



TRACE TW LEAD - BOTTOM
 Horizontal Bottom Lead Entry
 5' Power Lead Cable with End Cap



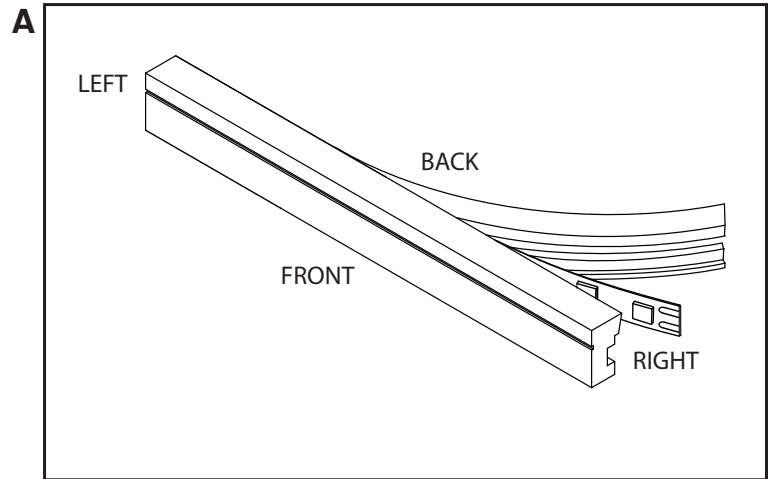
TRACE END CAP
 Horizontal End Cap (No Lead)
 1 pc End Cap with 4 Screws



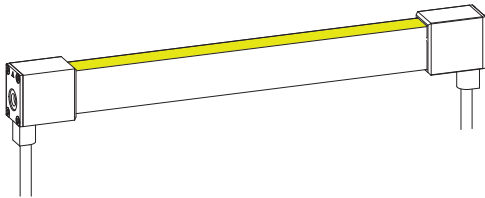
Power Leads - How to Configure

It is important to note the orientation of TRACE and what is considered Left Facing and Right Facing. TRACE is polarity specific and proper submission of power leads for each run is necessary for factory prep standards.

HORIZONTAL TRACE - The cut window will always indicate as Back (Image A).

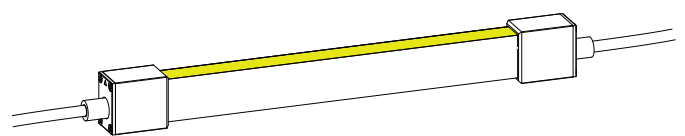


Power Lead Configurations - TW



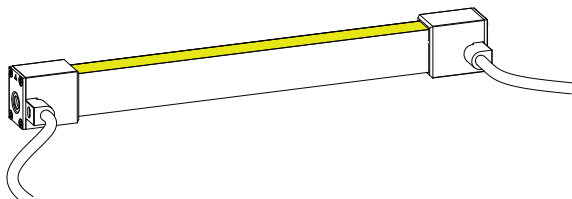
TRCE-H-TW-LEAD-B-B

Left Facing Bottom Lead with 5' Power Cable to Right Facing Bottom Lead with 5' Power Cable



TRCE-H-TW-LEAD-F-F

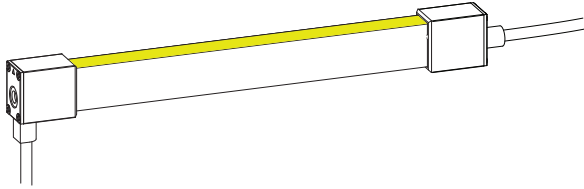
Left Facing Front Lead with 5' Power Cable to Right Facing Front Lead with 5' Power Cable



TRCE-H-TW-LEAD-S-S

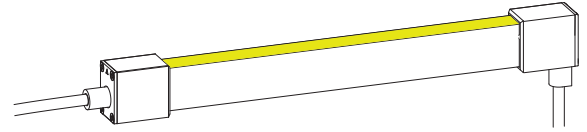
Left Facing Side Lead with 5' Power Cable to Right Facing Side Lead with 5' Power Cable

Power Lead Configurations - TW



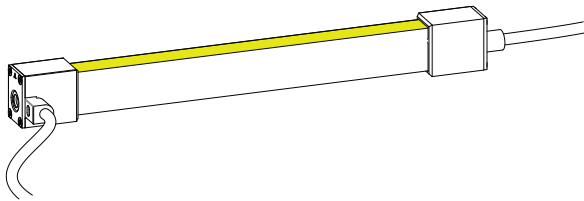
TRCE-H-TW-LEAD-B-F

Left Facing Bottom Lead with 5' Power Cable to
Right Facing Front Lead with 5' Power Cable



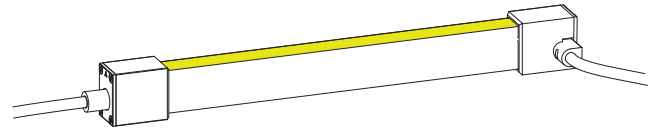
TRCE-H-TW-LEAD-F-B

Left Facing Front Lead with 5' Power Cable to
Right Facing Bottom Lead with 5' Power Cable



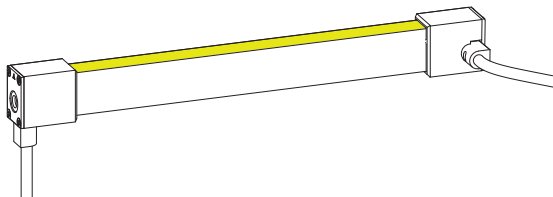
TRCE-H-TW-LEAD-S-F

Left Facing Side Lead with 5' Power Cable to
Right Facing Front Lead with 5' Power Cable



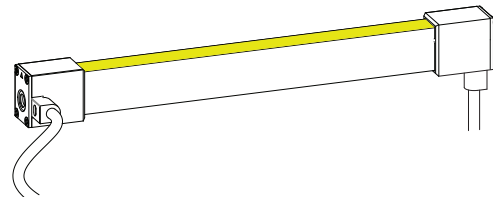
TRCE-H-TW-LEAD-F-S

Left Facing Front Lead with 5' Power Cable to
Right Facing Side Lead with 5' Power Cable



TRCE-H-TW-LEAD-B-S

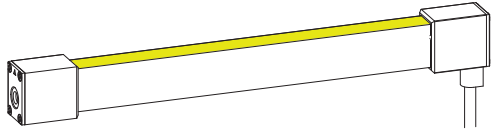
Left Facing Bottom Lead with 5' Power Cable to
Right Facing Side Lead with 5' Power Cable



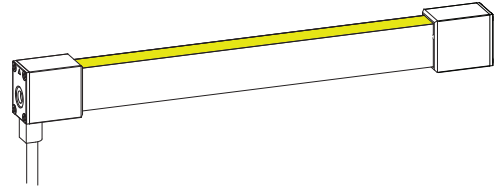
TRCE-H-TW-LEAD-S-B

Left Facing Side Lead with 5' Power Cable to
Right Facing Bottom Lead with 5' Power Cable

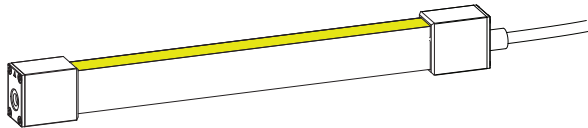
Power Lead Configurations - TW



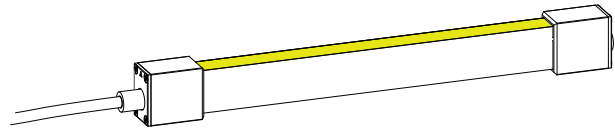
TRCE-H-TW-LEAD-E-B
Left End Cap Lead to Right Facing Bottom Lead with 5' Power Cable



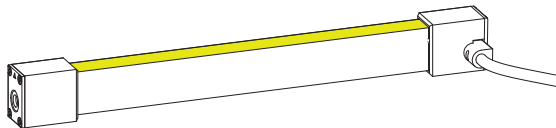
TRCE-H-TW-LEAD-B-E
Left Facing Bottom Lead with 5' Power Cable to Right End Cap



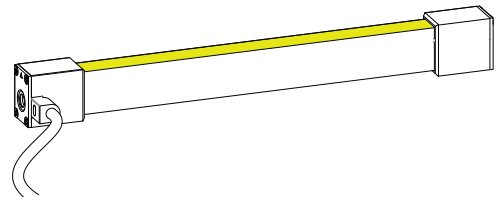
TRCE-H-TW-LEAD-E-F
Left End Cap Lead to Right Facing Front Lead with 5' Power Cable



TRCE-H-TW-LEAD-F-E
Left Facing Front Lead with 5' Power Cable to Right End Cap

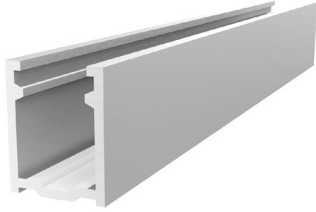


TRCE-H-TW-LEAD-E-S
Left Facing End Cap Lead to Right Facing Side Lead with 5' Power Cable

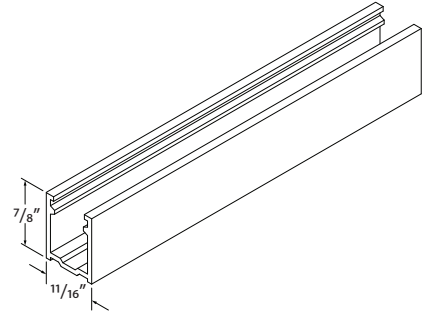


TRCE-H-TW-LEAD-S-E
Left Facing Side Lead with 5' Power Cable to Right Facing End Cap

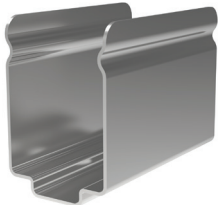
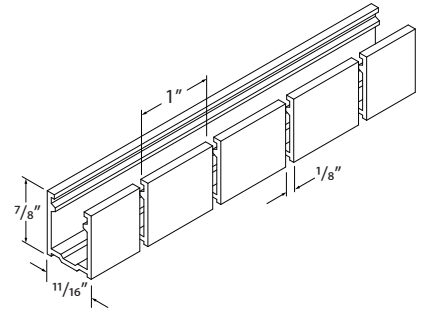
Mounting Options



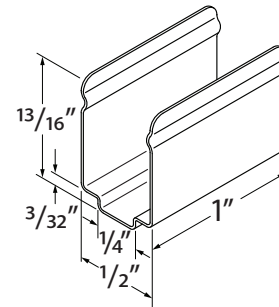
TRCE-H-SLV-SCHAN-6.5
 Straight Channel
 Horizontal Profile Only
 6.56' Length, Aluminum



TRCE-H-SLV-NCHAN-6.5
 Notched Channel
 Horizontal Profile Only
 Radius Bend: 11"
 6.56' Length, Aluminum

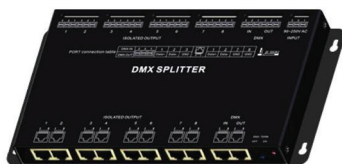


TRCE-H-SLS-MTCLIPS
 Mounting Clips
 Horizontal Profile Only
 2 Stainless Steel Clips with 2 Screws



FLXD-SIL-GE-10
 GE Silicone Tube
 Use to adhere TRACE into entire run length of channel
 25' estimated bead length per 10oz tube

Accessories



DMX-SPLT-8
 DMX Splitter
 8 ports of DMX 512, RJ45 and 3-pin Hardwire Connection

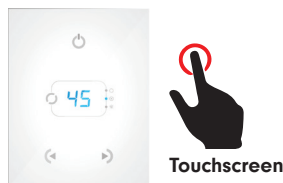
Note: If the number of DMX sub-controllers exceed 32 units, a DMX Splitter is required.

Controls & Software

CONTROLS



TVOQ-10-XX-7
XX = BK (black), WH (white)
1024 DMX channel, 500 scene,
10 zone, glass touch screen



TVOQ-2-XX
XX = BK (black), WH (white)
512 DMX channel, 99 scene,
1 zone, glass touch screen



TVOQ-1-WHT
512 DMX channel, 16 scene,
4 zone, glass touch screen

SOFTWARE



Cue™ and CuePro™ softwares are specifically designed for the TivoCUE™ in-wall DMX controls and includes an array of tools required by the latest DMX lighting fixtures. Intuitive, with easy-to-use effects that can be dropped into timelines, and multi-zone synchronization capabilities allow you to program a project effortlessly.



Power Supplies - Indoor

ADUL - VARIABLE / DMX SINGLE ADDRESS

DESCRIPTION	CAT NO	APPLICATION	PRIMARY VOLTAGE	SECONDARY VOLTAGE	CIRCUIT BREAKERS	MAX LOAD	CIRCUIT CAPACITY
ADUL Series Class 2 Transformer	ADUL-120-1-4-24-VW	Indoor / Damp	100-277V AC 5ø60 Hz	24V DC	1	96W	4A
	ADUL-240-2-4-24-VW				2	2x96W	2x4A
	ADUL-320-3-4-24-VW				3	3x96W	3x4A

ADUL - VARIABLE / DMX MULTI ADDRESS

DESCRIPTION	CAT NO	APPLICATION	PRIMARY VOLTAGE	SECONDARY VOLTAGE	CIRCUIT BREAKERS	MAX LOAD	CIRCUIT CAPACITY
ADUL Series Class 2 Transformer	ADUL-240-2-4-24-VW-2	Indoor / Damp	100-277V AC 5ø60 Hz	24V DC	2	2x96W	2x4A
	ADUL-320-3-4-24-VW-3				3	3x96W	3x4A

Power Supplies - Outdoor

ADNM - VARIABLE / DMX SINGLE ADDRESS

DESCRIPTION	CAT NO	APPLICATION	PRIMARY VOLTAGE	SECONDARY VOLTAGE	CIRCUIT BREAKERS	MAX LOAD	CIRCUIT CAPACITY
ADNM Series Class 2 Transformer	ADNM-90-1-4-24-VW	Indoor / Outdoor	100-277V AC 5ø60 Hz	24V DC	1	90W	3.75A
	ADNM-120-1-4-24-VW				1	96W	4A
	ADNM-240-2-4-24-VW				2	2x96W	2x4A
	ADNM-320-3-4-24-VW				3	3x96W	3x4A

ADNM - VARIABLE / DMX MULTI ADDRESS

DESCRIPTION	CAT NO	APPLICATION	PRIMARY VOLTAGE	SECONDARY VOLTAGE	CIRCUIT BREAKERS	MAX LOAD	CIRCUIT CAPACITY
ADNM Series Class 2 Transformer	ADNM-240-2-4-24-VW-2	Indoor / Outdoor	100-277V AC 5ø60 Hz	24V DC	2	2x96W	2x4A
	ADNM-320-3-4-24-VW-3				3	3x96W	3x4A

DMX Sub-Controller

DESCRIPTION	CAT NO	MODES	WATTAGE	PRIMARY VOLTAGE	DIMENSION
DMX Sub-controller	TPL-RGBW-180-24	Sub-controller only	5X96W	24V DC	2.87" W X 6.46" L X 1.45" H